

# Solid state relays

news **2019**



 **retpol**® S.A.

solid state relays, miniature

# RSR32



RSR32-...-M

RSR32-24D2-5M	zero-crossing switching, DC control	input voltage 5 V DC, load voltage 240 V AC (single-phase), load current 2 A
RSR32-24D2-12M		input voltage 12 V DC, load voltage 240 V AC (single-phase), load current 2 A
RSR32-24D2-24M		input voltage 24 V DC, load voltage 240 V AC (single-phase), load current 2 A
RSR32-24D2R-5M	random-on switching, DC control	input voltage 5 V DC, load voltage 240 V AC (single-phase), load current 2 A
RSR32-24D2R-12M		input voltage 12 V DC, load voltage 240 V AC (single-phase), load current 2 A
RSR32-24D2R-24M		input voltage 24 V DC, load voltage 240 V AC (single-phase), load current 2 A

solid state relays

# RSR72



RSR72-28A10-H	zero-crossing switching, AC control (90...280 V AC)	integrated with heatsinks, load voltage 240 V AC (single-phase), load current 10 A
RSR72-28A20-H		integrated with heatsinks, load voltage 240 V AC (single-phase), load current 20 A
RSR72-28A30-H		integrated with heatsinks, load voltage 240 V AC (single-phase), load current 30 A
RSR72-28A40-H		integrated with heatsinks, load voltage 240 V AC (single-phase), load current 40 A
RSR72-28A75-H		integrated with heatsinks, load voltage 240 V AC (single-phase), load current 75 A
RSR72-48A10-H		integrated with heatsinks, load voltage 480 V AC (single-phase), load current 10 A
RSR72-48A20-H		integrated with heatsinks, load voltage 480 V AC (single-phase), load current 20 A
RSR72-48A30-H	integrated with heatsinks, load voltage 480 V AC (single-phase), load current 30 A	
RSR72-48A40-H	integrated with heatsinks, load voltage 480 V AC (single-phase), load current 40 A	
RSR72-48A75-H	integrated with heatsinks, load voltage 480 V AC (single-phase), load current 75 A	
RSR72-24D10-H	zero-crossing switching, DC control (4...32 V DC)	integrated with heatsinks, load voltage 240 V AC (single-phase), load current 10 A
RSR72-24D20-H		integrated with heatsinks, load voltage 240 V AC (single-phase), load current 20 A
RSR72-24D30-H		integrated with heatsinks, load voltage 240 V AC (single-phase), load current 30 A
RSR72-24D40-H		integrated with heatsinks, load voltage 240 V AC (single-phase), load current 40 A
RSR72-24D75-H		integrated with heatsinks, load voltage 240 V AC (single-phase), load current 75 A
RSR72-48D10-H		integrated with heatsinks, load voltage 480 V AC (single-phase), load current 10 A
RSR72-48D20-H		integrated with heatsinks, load voltage 480 V AC (single-phase), load current 20 A
RSR72-48D30-H	integrated with heatsinks, load voltage 480 V AC (single-phase), load current 30 A	
RSR72-48D40-H	integrated with heatsinks, load voltage 480 V AC (single-phase), load current 40 A	
RSR72-48D75-H	integrated with heatsinks, load voltage 480 V AC (single-phase), load current 75 A	
RSR72-60D20-H	integrated with heatsinks, load voltage 600 V AC (single-phase), load current 20 A	
RSR72-60D30-H	integrated with heatsinks, load voltage 600 V AC (single-phase), load current 30 A	
RSR72-60D40-H	integrated with heatsinks, load voltage 600 V AC (single-phase), load current 40 A	
RSR72-60D75-H	integrated with heatsinks, load voltage 600 V AC (single-phase), load current 75 A	
RSR72-48D10-RH	random-on switching, DC control (4...32 V DC)	integrated with heatsinks, load voltage 480 V AC (single-phase), load current 10 A
RSR72-48D20-RH		integrated with heatsinks, load voltage 480 V AC (single-phase), load current 20 A
RSR72-48D30-RH		integrated with heatsinks, load voltage 480 V AC (single-phase), load current 30 A
RSR72-48D40-RH		integrated with heatsinks, load voltage 480 V AC (single-phase), load current 40 A
RSR72-60D20-RH		integrated with heatsinks, load voltage 600 V AC (single-phase), load current 20 A
RSR72-60D30-RH		integrated with heatsinks, load voltage 600 V AC (single-phase), load current 30 A
RSR72-60D40-RH		integrated with heatsinks, load voltage 600 V AC (single-phase), load current 40 A
RSR72-60D75-RH	integrated with heatsinks, load voltage 600 V AC (single-phase), load current 75 A	

solid state relays, miniature

# RSR35



RSR35-...-M

RSR35-48D01-5M	DC control	input voltage 5 V DC, load voltage 48 V DC (single-phase), load current 0,1 A
RSR35-48D01-12M		input voltage 12 V DC, load voltage 48 V DC (single-phase), load current 0,1 A
RSR35-48D01-24M		input voltage 24 V DC, load voltage 48 V DC (single-phase), load current 0,1 A
RSR35-48D01-48M		input voltage 48 V DC, load voltage 48 V DC (single-phase), load current 0,1 A
RSR35-48D01-60M		input voltage 60 V DC, load voltage 48 V DC (single-phase), load current 0,1 A
RSR35-48D3-5M		input voltage 5 V DC, load voltage 48 V DC (single-phase), load current 3 A
RSR35-48D3-12M		input voltage 12 V DC, load voltage 48 V DC (single-phase), load current 3 A
RSR35-48D3-24M		input voltage 24 V DC, load voltage 48 V DC (single-phase), load current 3 A
RSR35-48D3-48M		input voltage 48 V DC, load voltage 48 V DC (single-phase), load current 3 A
RSR35-48D3-60M		input voltage 60 V DC, load voltage 48 V DC (single-phase), load current 3 A
RSR35-24D4-5M		input voltage 5 V DC, load voltage 24 V DC (single-phase), load current 4 A
RSR35-24D4-12M		input voltage 12 V DC, load voltage 24 V DC (single-phase), load current 4 A
RSR35-24D4-24M		input voltage 24 V DC, load voltage 24 V DC (single-phase), load current 4 A
RSR35-24D4-48M		input voltage 48 V DC, load voltage 24 V DC (single-phase), load current 4 A
RSR35-24D4-60M		input voltage 60 V DC, load voltage 24 V DC (single-phase), load current 4 A

solid state relays

# RSR62



RSR62-...



RTP-30A

RSR62-48A25	zero-crossing switching, AC control (90...280 V AC)	industrial relays, load voltage 480 V AC (three-phase), load current 25 A
RSR62-48A40		industrial relays, load voltage 480 V AC (three-phase), load current 40 A
RSR62-48A60		industrial relays, load voltage 480 V AC (three-phase), load current 60 A
RSR62-48A80		industrial relays, load voltage 480 V AC (three-phase), load current 80 A
RSR62-60A25		industrial relays, load voltage 600 V AC (three-phase), load current 25 A
RSR62-60A40		industrial relays, load voltage 600 V AC (three-phase), load current 40 A
RSR62-60A60		industrial relays, load voltage 600 V AC (three-phase), load current 60 A
RSR62-60A80		industrial relays, load voltage 600 V AC (three-phase), load current 80 A
RSR62-48D25	zero-crossing switching, DC control (4...32 V DC)	industrial relays, load voltage 480 V AC (three-phase), load current 25 A
RSR62-48D40		industrial relays, load voltage 480 V AC (three-phase), load current 40 A
RSR62-48D60		industrial relays, load voltage 480 V AC (three-phase), load current 60 A
RSR62-48D80		industrial relays, load voltage 480 V AC (three-phase), load current 80 A
RSR62-60D25		industrial relays, load voltage 600 V AC (three-phase), load current 25 A
RSR62-60D40		industrial relays, load voltage 600 V AC (three-phase), load current 40 A
RSR62-60D60		industrial relays, load voltage 600 V AC (three-phase), load current 60 A
RSR62-60D80		industrial relays, load voltage 600 V AC (three-phase), load current 80 A
RSR62-60D25-R	random-on switching, DC control (4...32 V DC)	industrial relays, load voltage 600 V AC (three-phase), load current 25 A
RSR62-60D40-R		industrial relays, load voltage 600 V AC (three-phase), load current 40 A
RSR62-60D60-R		industrial relays, load voltage 600 V AC (three-phase), load current 60 A
RSR62-60D80-R		industrial relays, load voltage 600 V AC (three-phase), load current 80 A
RTP-30A		thermal pads for relays RSR62, thermal resistance 0,1 °C/W, flammability class V-0

solid state relays

# RSR52



RSR52-...

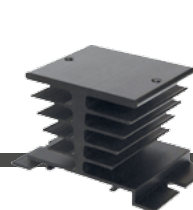


RTP-10

RSR52-24A10	zero-crossing switching, AC control (90...280 V AC)	industrial relays, load voltage 240 V AC (single-phase), load current 10 A
RSR52-24A25		industrial relays, load voltage 240 V AC (single-phase), load current 25 A
RSR52-24A40		industrial relays, load voltage 240 V AC (single-phase), load current 40 A
RSR52-24A60		industrial relays, load voltage 240 V AC (single-phase), load current 60 A
RSR52-24A80		industrial relays, load voltage 240 V AC (single-phase), load current 80 A
RSR52-48A10		industrial relays, load voltage 480 V AC (single-phase), load current 10 A
RSR52-48A25		industrial relays, load voltage 480 V AC (single-phase), load current 25 A
RSR52-48A40		industrial relays, load voltage 480 V AC (single-phase), load current 40 A
RSR52-48A60		industrial relays, load voltage 480 V AC (single-phase), load current 60 A
RSR52-48A80		industrial relays, load voltage 480 V AC (single-phase), load current 80 A
RSR52-60A25		industrial relays, load voltage 600 V AC (single-phase), load current 25 A
RSR52-60A40		industrial relays, load voltage 600 V AC (single-phase), load current 40 A
RSR52-60A60	industrial relays, load voltage 600 V AC (single-phase), load current 60 A	
RSR52-24D10	zero-crossing switching, DC control (4...32 V DC)	industrial relays, load voltage 240 V AC (single-phase), load current 10 A
RSR52-24D25		industrial relays, load voltage 240 V AC (single-phase), load current 25 A
RSR52-24D40		industrial relays, load voltage 240 V AC (single-phase), load current 40 A
RSR52-24D60		industrial relays, load voltage 240 V AC (single-phase), load current 60 A
RSR52-24D80		industrial relays, load voltage 240 V AC (single-phase), load current 80 A
RSR52-48D10		industrial relays, load voltage 480 V AC (single-phase), load current 10 A
RSR52-48D25		industrial relays, load voltage 480 V AC (single-phase), load current 25 A
RSR52-48D40		industrial relays, load voltage 480 V AC (single-phase), load current 40 A
RSR52-48D60		industrial relays, load voltage 480 V AC (single-phase), load current 60 A
RSR52-48D80		industrial relays, load voltage 480 V AC (single-phase), load current 80 A
RSR52-60D25		industrial relays, load voltage 600 V AC (single-phase), load current 25 A
RSR52-60D40		industrial relays, load voltage 600 V AC (single-phase), load current 40 A
RSR52-60D60	industrial relays, load voltage 600 V AC (single-phase), load current 60 A	
RSR52-24D25-R	random-on switching, DC control (4...32 V DC)	industrial relays, load voltage 240 V AC (single-phase), load current 25 A
RSR52-24D60-R		industrial relays, load voltage 240 V AC (single-phase), load current 60 A
RSR52-24D80-R		industrial relays, load voltage 240 V AC (single-phase), load current 80 A
RSR52-48D25-R		industrial relays, load voltage 480 V AC (single-phase), load current 25 A
RSR52-48D60-R		industrial relays, load voltage 480 V AC (single-phase), load current 60 A
RSR52-48D80-R		industrial relays, load voltage 480 V AC (single-phase), load current 80 A
RSR52-60D25-R		industrial relays, load voltage 600 V AC (single-phase), load current 25 A
RSR52-60D60-R		industrial relays, load voltage 600 V AC (single-phase), load current 60 A
RTP-10		thermal pads for relays RSR52, thermal resistance 0,1 °C/W, flammability class V-0

heatsinks for RSR52, RSR62

# RH



RH21



RH04B-F

RH21 (2,1 °C/W)	RH17A (1,7 °C/W)	RH16 (1,6 °C/W)	RH09 (0,9 °C/W)	RH08-F (0,35 °C/W)
RH19A (1,9 °C/W)	RH17B (1,7 °C/W)	RH16-F (0,6 °C/W)	RH04A-F (0,4 °C/W)	RH04B (0,4 °C/W)
RH19B (1,9 °C/W)	RH06B (1,5 °C/W)	RH11 (1,1 °C/W)	RH08 (0,8 °C/W)	RH04B-F (0,15 °C/W)



Export Sales Department: phone +48 68 47 90 832, 951, [export@repol.com.pl](mailto:export@repol.com.pl), [www.repol.com.pl](http://www.repol.com.pl)