

MOREK

Creating a better future for You



ELECTRICAL COMPONENTS

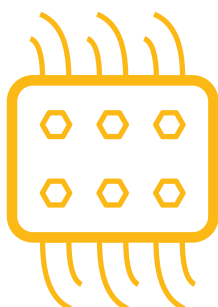
2021



Why Morek?

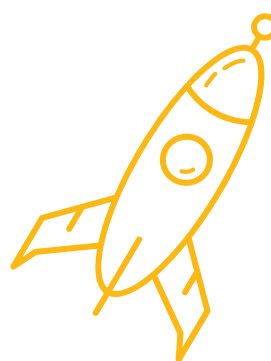
We, at Morek, strongly believe in creating a positive change in the electrical industry, helping our customers efficiently solve their issues, big and small, saving your money and time, creating a better future for you.

Through our long experience in the electrical industry, we know all the roadblocks our customers are facing day to day and how much time and effort is wasted every day to overcome them. Our goal is to eliminate these obstacles on the path to your success, so that you can devote your time to more important things.



Our tailor-made our product portfolio contains everything you need to manage the connections within an electrical cabinet, all in one place as a complete solution, so that you don't have to waste time on searching for required products from tens of different suppliers.

We offer smart and innovative technical solutions that often resolve complex technical issues in a simple and elegant way, with products that can save valuable space in the enclosure or replace more expensive products while improving technical functionality.

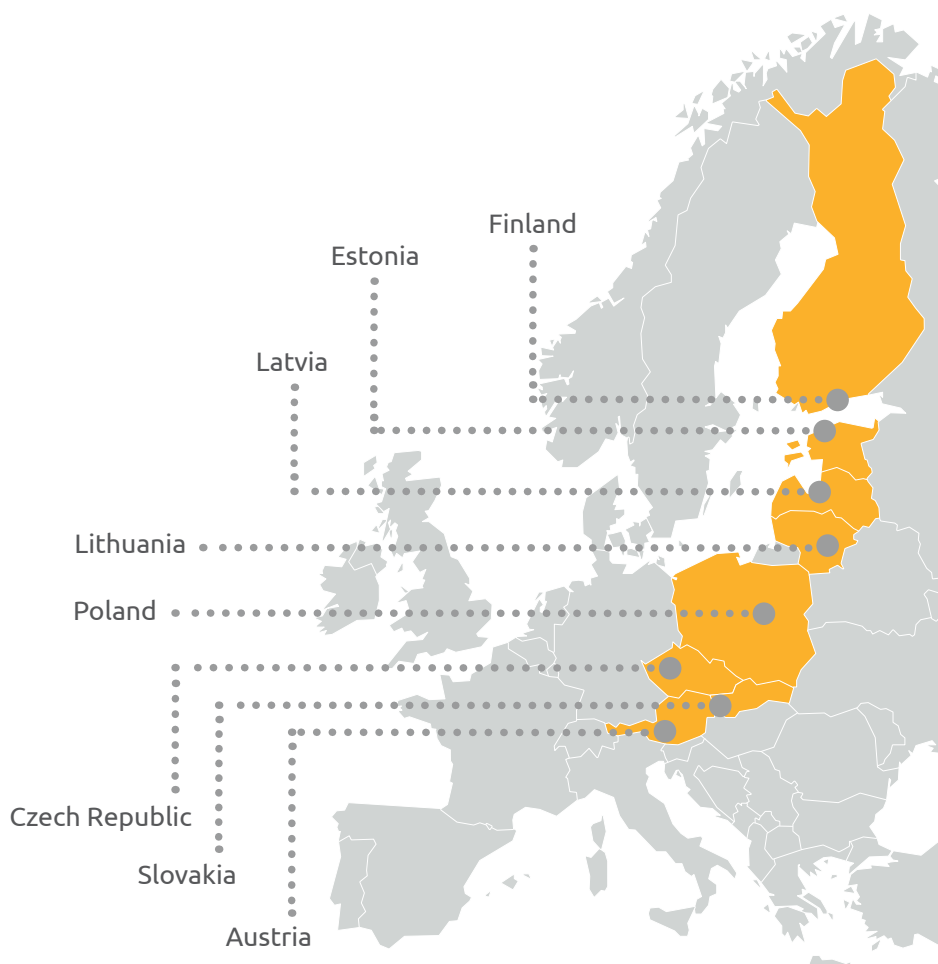


Our e-morek platform is designed to make the process of creating an order or requesting a quote as simple as possible, with intuitive interface, visible stock levels and personalized prices.

We provide our customers with a full technical database of our products, including ETIM format, along with product images and drawings, helping you integrate our solutions into your projects and systems.



We are dedicating our time and effort to solving your issues, simple and complex, technical and administrative. And of course, our products are of the highest quality. You can rely on that.



High runners



Universal terminals OTL
Page 7



Distribution blocks OJL
Page 20



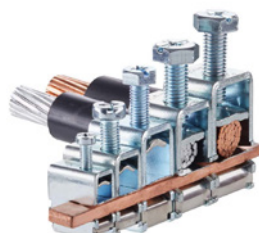
Distribution blocks Moblock
Page 24



Device connectors
Page 30



Terminal BB holders
Page 42



Bow terminals
Page 47



Insulated copper flexible
busbar Moflex
Page 66



Sealing and edge
protection profiles
Page 74



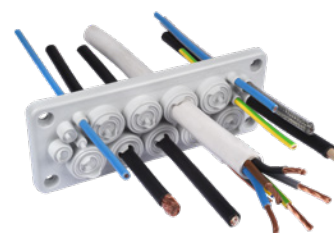
Plastic cable glands
Page 78



Metal cable glands
Page 89



Ventilation glands
Page 99



Cable entry plates
Page 110



Splitting cable entry
plates (IP55)
Page 124



Shear bolt cable lugs
Page 128



Shear bolt cable connectors
Page 131



Gel joints Break
Page 153

Distribution blocks OJL

1000 V
AC/DC

Bimetal
(Al/Cu)

Up to
400 A
240 mm²

Class A

Certified according to
standards EN 61238-1
and EN 60947-7-1



Distribution blocks OJL are intended for distributing conductors with larger cross-section to several smaller ones. These blocks are provided in 6 standard designs with a nominal connecting cross-section of 70 mm² Al/Cu (6 outputs for copper cable), 120 mm² Al/Cu (11 outputs for copper cable) and 240 mm² Al/Cu (7 outputs for copper cable). AF and AFS models are designed for connecting (input) of flexible busbars 10 x 25 mm or several other bars of 1 x 25 mm (look more about insulated copper flexible busbars Moflex on page 66).

The screws are tightened by a hexagonal key. Blocks can be installed on a standard DIN rail or can be mounted using screws on a flat solid surface. Maximum operating temperature is 80 °C. Cover sealing is possible on AS and AFS models. Housing for all design types has a protection class IP20.



OJL 200A

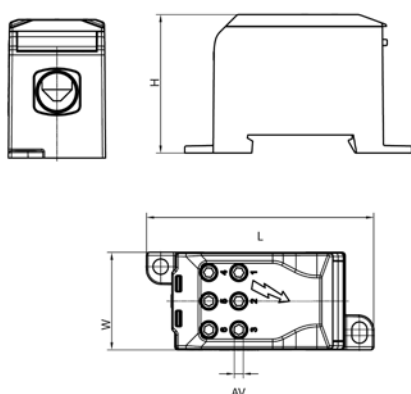


OJL 280A

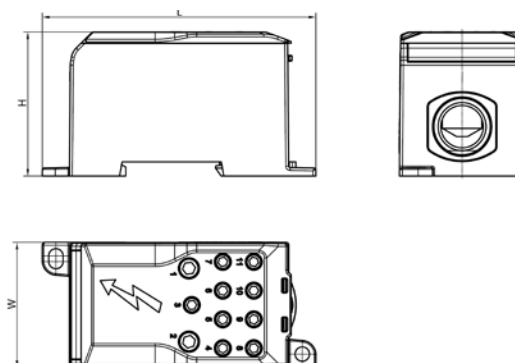
Black / Grey		MAB1201S10	MAB1281S10
Blue / Grey		MAB1201B10	MAB1281B10
Green / Grey		MAB1201G10	MAB1281G10
Technical data			
Conductor cross-section			
Input wire Al/Cu (mm ²)	1 x 10 - 70	1 x 35 - 120	
Output wire Cu (mm ²)	6 x 2,5 - 16	4 x 2,5 - 10 5 x 2,5 - 16 2 x 6 - 35	
Nominal voltage AC / DC (V)	1000	1000	
Nominal current (A)	200 (Cu) / 160 (Al)	280 (Cu) / 250 (Al)	
Width / Height / Length (mm)	32,4 / 46 / 75,8	44,4 / 51 / 97	
Screw, hexagonal key	No. 3 / 5	No. 3 / 4 / 6	
Tightening torque (Nm)	3 Nm (2,5 - 16 mm ²) 6 Nm (25 - 35 mm ²) 10 Nm (50 - 70 mm ²) -	3 Nm (2,5 - 16 mm ²) 6 Nm (25 - 35 mm ²) 10 Nm (50 - 70 mm ²) 19 Nm (95 - 120 mm ²)	
Mounting	DIN rail, screw	DIN rail, screw	
Weight (g)	84	178	
Package (pcs)	24	12	

Dimensions

OJL 200A



OJL 280A





OJL 400A OJL 400AS* OJL 400AF OJL 400ASF*

Black / Grey		MAB1401S10	MAB1402S10	MAB1403S10	MAB1404S10
Blue / Grey		MAB1401B10	-	MAB1403B10	-
Green / Grey		MAB1401G10	-	MAB1403G10	-

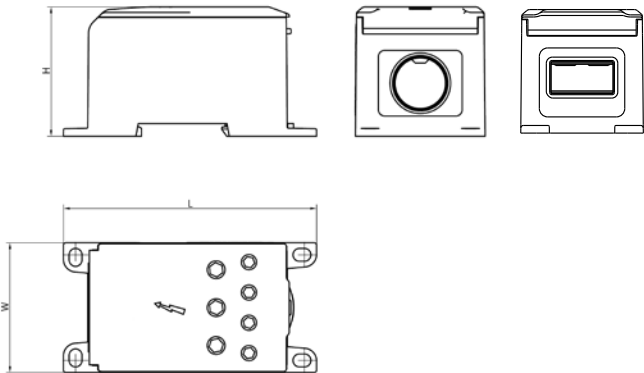
Technical data

Conductor cross-section				
Input wire Al/Cu (mm²)	1 x 95 - 240	1 x 95 - 240	1 x Flexible busbar 10x Cu (1x25)	1 x Flexible busbar 10x Cu (1x25)
Output wire Cu (mm²)	4 x 2,5 - 35 3 x 6 - 50	4 x 2,5 - 35 3 x 6 - 50	4 x 2,5 - 35 3 x 6 - 50	4 x 2,5 - 35 3 x 6 - 50
Nominal voltage AC / DC (V)	1000	1000	1000	1000
Nominal current (A)	425 (Cu) / 380 (Al)	425 (Cu) / 380 (Al)	425 (Cu) / 380 (Al)	425 (Cu) / 380 (Al)
Width / Height / Length (mm)	51,4 / 51,2 / 100,3	51,4 / 51,2 / 100,3	51,4 / 51,2 / 100,3	51,4 / 51,2 / 100,3
Screw, hexagonal key	No. 4 / 5 / 8	No. 4 / 5 / 8	No. 4 / 5	No. 4 / 5
Tightening torque (Nm)	6 Nm (2,5 - 35 mm²) 10 Nm (6 - 50 mm²) 19 Nm (95 - 240 mm²)	6 Nm (2,5 - 35 mm²) 10 Nm (6 - 50 mm²) 19 Nm (95 - 240 mm²)	6 Nm (2,5 - 35 mm²) 10 Nm (6 - 50 mm²) 10 Nm (10x Cu 1x25 mm²)	6 Nm (2,5 - 35 mm²) 10 Nm (6 - 50 mm²) 10 Nm (10x Cu 1x25 mm²)
Mounting	DIN rail, screw	DIN rail, screw	DIN rail, screw	DIN rail, screw
Weight (g)	250	250	247	247
Package (pcs)	8	8	8	8

* Model can be sealed.

Dimensions

OJL 400A



OJL busbar adapters are used for connecting OJL connectors to copper or aluminium busbars.
Materials: Tin plated copper



BA 200A



BA 280A



BA 400A

Grey	MAB1201EBA	MAB1281EBA	MAB1401EBA
------	------------	------------	------------

Technical data

D	9,8	13,8	13,8
H	5,95	7,25	9,75
H1	4,8	5	5,2
L	45	61	70
W	14	23	30
W1	6,8	10,8	10,8
Weight (g)	22	49	90
Package (pcs)	24	12	8

Dimensions

