

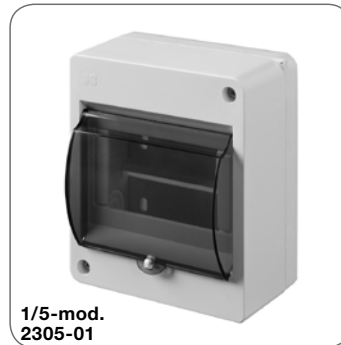


ELEKTRO-PLAST

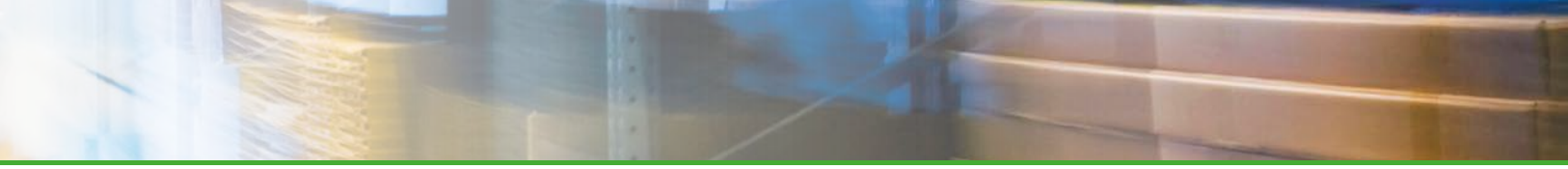


MIKRO/MINI
CASINGS

Protection degree	IP 20 / IP 30
Material	PS
Impact resistance	IK 05
Thermal condition	-20°C +70°C
Thermal test	70°C
Norma	PN-EN 62208:2011 PN-EN 60670-24:2013



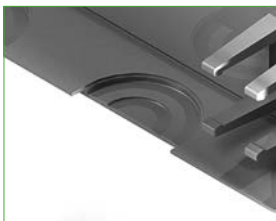
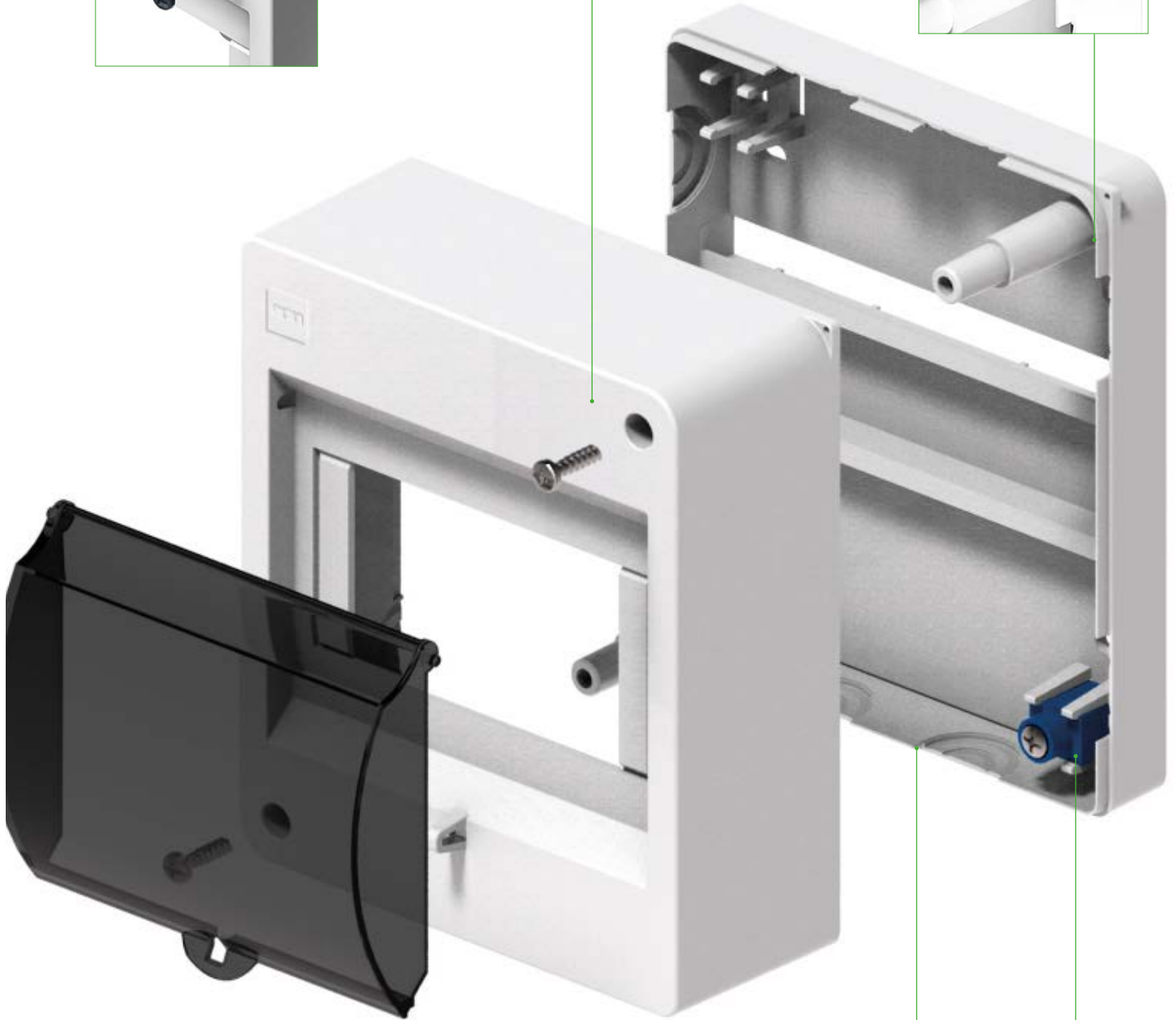
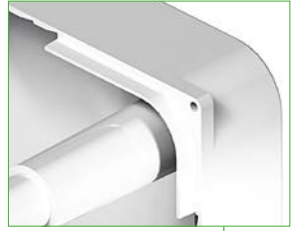
- protection degree IP 20 / IP 30
- protection class II
- S2, S4 MIKRO
- S2, S3, S4, S5, S6 MINI
- impact resistance IK05
- sealing possibility: casings and doors



hardened steel screws for fast and solid assembly



sealing possibility: casings and doors



weaknesses for cables at casing wall sides



protected terminal to avoid accidents

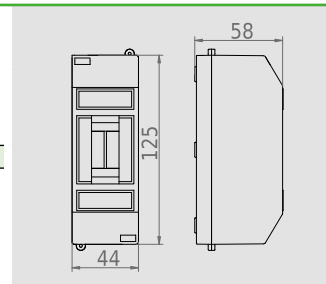
IP 30 IK 05 400 V PS



MIKRO CASINGS SURFACE MOUNTED S-2

Rows / modules	Type	Term. N	Pack.	Weight	Index new
1/2	S2	-	1 pc. 20	kg/1 pc. 0,08	2342-00

Casing folded into CLICK type self-locking
Sealing possibility casings. Snap mounting.
NORM: PN-EN 62208:2011, PN-EN 60670-24:2013 Dimensions: 44x125x58 mm



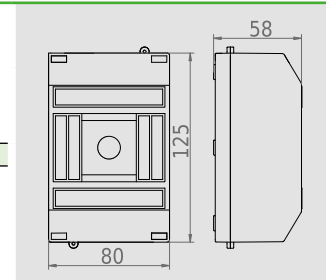
IP 30 IK 05 400 V PS



MIKRO CASINGS SURFACE MOUNTED S-4

Rows / modules	Type	Term. N	Pack.	Weight	Index new
1/2	S4	-	1 pc. 12	kg/1 pc. 0,12	2344-00

Casing folded into CLICK type self-locking
Sealing possibility casings. Snap mounting.
NORM: PN-EN 62208:2011, PN-EN 60670-24:2013 Dimensions: 80x125x58 mm



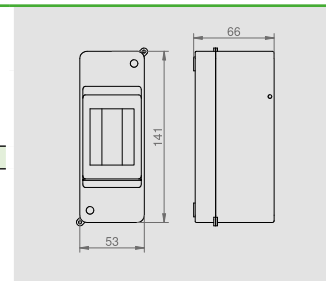
IP 20 IK 05 400 V PS



MINI CASINGS SURFACE MOUNTED TYP S-2

Rows / modules	Type	Term. N	Pack.	Weight	Index new
1/2	S2	-	1 pc. 20	kg/1 pc. 0,08	2302-00

Sealing possibility casings.
NORM: PN-EN 62208:2011, PN-EN 60670-24:2013 Dimensions: 53x141x66 mm



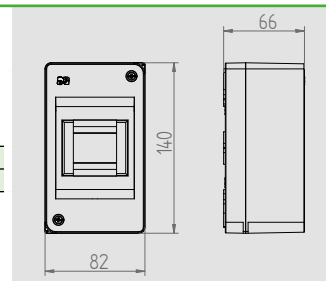
IP 20 IK 05 400 V PS



MINI CASINGS SURFACE MOUNTED TYP S-3

Rows / modules	Type	Term. N	Pack.	Weight	Index new
1/3	S3	-	1 pc. 12	kg/1 pc. 0,13	2303-00
1/3	S3	tak	12	0,13	2303-10

Sealing possibility casings.
Equipped with a N terminal 1x2,5mm²
NORM: PN-EN 62208:2011, PN-EN 60670-24:2013 Dimensions: 82x140x66 mm



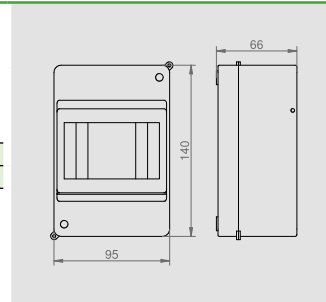
IP 20 IK 05 400 V PS



MINI CASINGS SURFACE MOUNTED TYP S-4

Rows / modules	Type	Term. PE+N	Pack.	Weight	Index new
1/4	S4	-	1 pc. 12	kg/1 pc. 0,13	2304-00
1/4	S4	tak	12	0,14	2304-10

Terminal blocks included
N 1x(4x10mm² + 1x16mm²)
PE 1x(4x10mm² + 1x16mm²)
Sealing possibility casings.
NORM: PN-EN 62208:2011, PN-EN 60670-24:2013 Dimensions: 95x140x66 mm



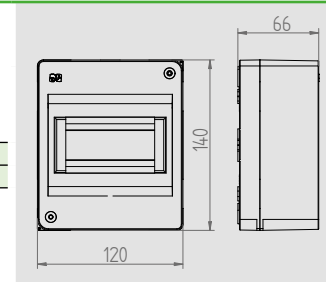
IP 20 IK 05 400 V PS



MINI CASINGS SURFACE MOUNTED TYP S-5

Rows / modules	Type	Term. N	Pack.	Weight	Index new
1/5	S5	-	1 pc. 9	kg/1 pc. 0,137	2305-00
1/5	S5	tak	9	0,140	2305-10

Terminal blocks included
Equipped with a N terminal 1x2,5mm²
Sealing possibility casings.
NORM: PN-EN 62208:2011, PN-EN 60670-24:2013 Dimensions: 120x140x66 mm



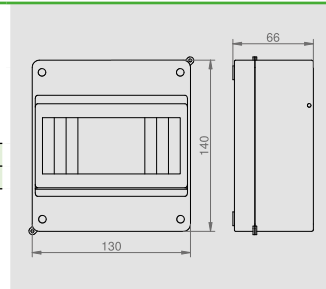
IP 20 IK 05 400 V PS



MINI CASINGS SURFACE MOUNTED S-6

Rows / modules	Type	Term PE+N	Pack. 1 pc.	Weight kg/1 pc.	Index new
1/6	S6	tak	9	0,23	2306-00
1/6	S6	-	9	0,24	2306-10

Terminal blocks included
 N 1x(6x10mm² + 1x16mm²)
 PE 1x(6x10mm² + 1x16mm²)
 Sealing possibility casings.
 NORM: PN-EN 62208:2011, PN-EN 60670-24:2013 Dimensions: 130x140x66 mm



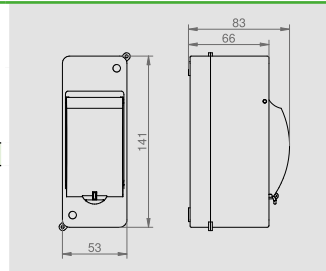
IP 30 IK 05 400 V PS



MINI CASINGS SURFACE MOUNTED S-2 WITH GLASS

Rows / modules	Type	Glass color	Term. N	Pack. 1 pc.	Weight kg/1 pc.	Index new
1/2	S2	Transp.	-	20	0,09	2302-01

Sealing possibility casings and door.
 NORM: PN-EN 62208:2011, PN-EN 60670-24:2013 Dimensions: 53x141x83 mm



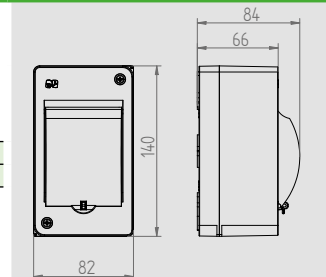
IP 30 IK 05 400 V PS



MINI CASINGS SURFACE MOUNTED S-3 WITH GLASS

Rows / modules	Type	Glass color	Term. N	Pack. 1 pc.	Weight kg/1 pc.	Index new
1/3	S3	Transp.	-	12	0,13	2303-01
1/3	S3	Transp.	tak	12	0,14	2303-11

Sealing possibility casings and door.
 Equipped with a N terminal 1x2,5mm²
 NORM: PN-EN 62208:2011, PN-EN 60670-24:2013 Dimensions: 82x140x84mm



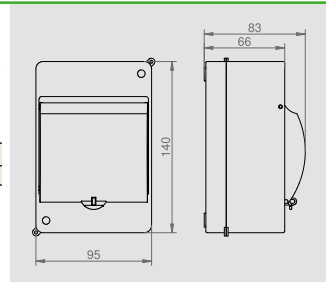
IP 30 IK 05 400 V PS



MINI CASINGS SURFACE MOUNTED S-4 WITH GLASS

Rows / modules	Type	Glass color	Term. PE+N	Pack. 1 pc.	Weight kg/1 pc.	Index new
1/4	S4	Transp.	-	12	0,15	2304-01
1/4	S4	Transp.	tak	12	0,16	2304-11

Terminal blocks included
 N 1x(4x10mm² + 1x16mm²)
 PE 1x(4x10mm² + 1x16mm²)
 Sealing possibility casings and door.
 NORM: PN-EN 62208:2011, PN-EN 60670-24:2013 Dimensions: 195x140x83 mm



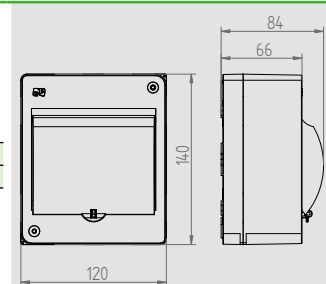
IP 30 IK 05 400 V PS



MINI CASINGS SURFACE MOUNTED S-5 WITH GLASS

Rows / modules	Type	Glass color	Term. N	Pack. 1 pc.	Weight kg/1 pc.	Index new
1/5	S5	Transp.	-	9	0,16	2305-01
1/5	S5	Transp.	tak	9	0,17	2305-11

Sealing possibility casings and door.
 Equipped with a N terminal 1x2,5mm²
 NORM: PN-EN 62208:2011, PN-EN 60670-24:2013 Dimensions: 120x140x84 mm



IP 30 IK 05 400 V PS



MINI CASINGS SURFACE MOUNTED S-6 WITH GLASS

Rows / modules	Type	Glass color	Term. PE+N	Pack. 1 pc.	Weight kg/1 pc.	Index new
1/6	S6	Transp.	tak	9	0,28	2306-01
1/6	S6	Transp.	-	9	0,30	2306-11

Terminal blocks included
 N 1x(6x10mm² + 1x16mm²)
 PE 1x(6x10mm² + 1x16mm²)
 Sealing possibility casings and door.
 NORM: PN-EN 62208:2011, PN-EN 60670-24:2013 Dimensions: 130x140x83 mm

